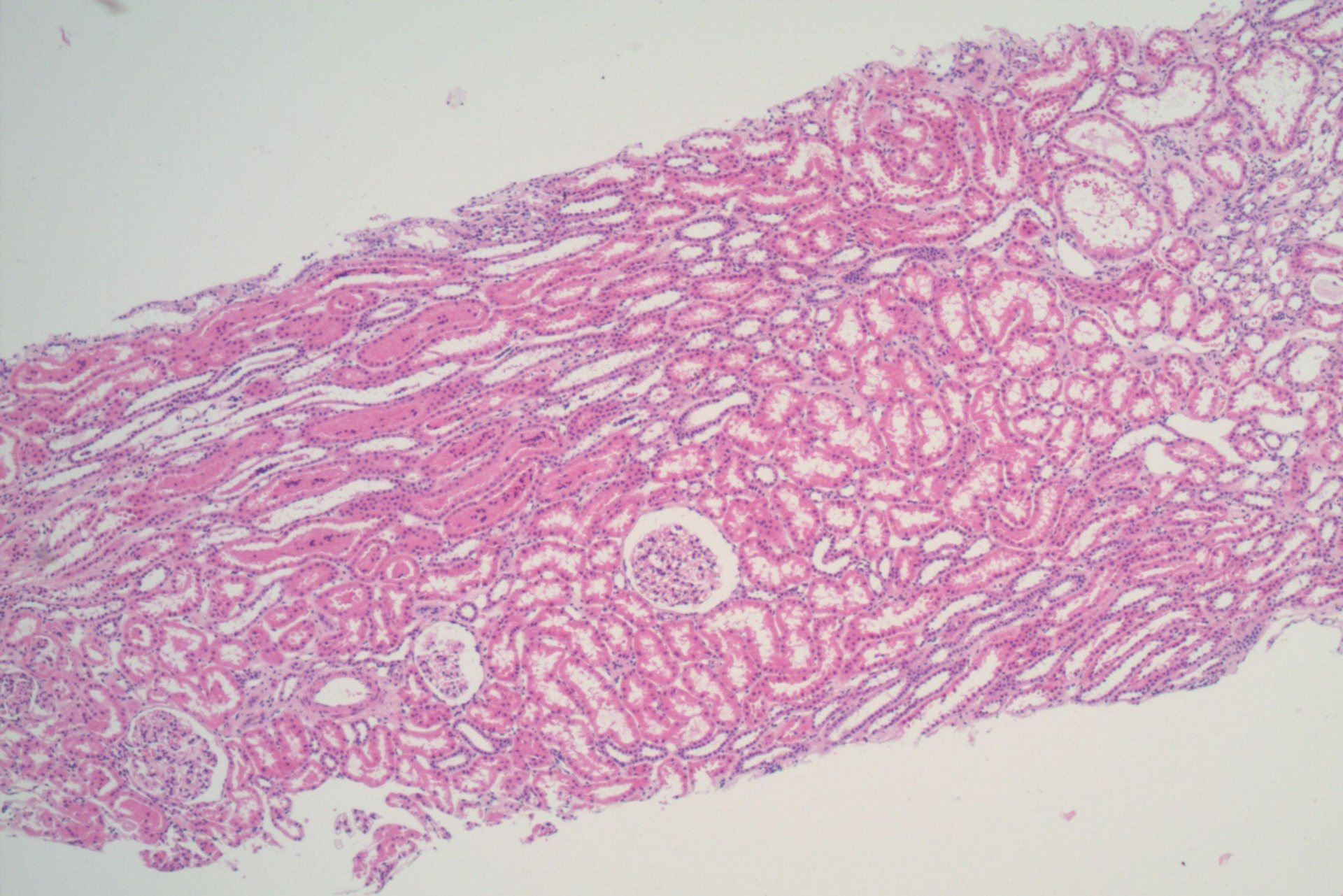
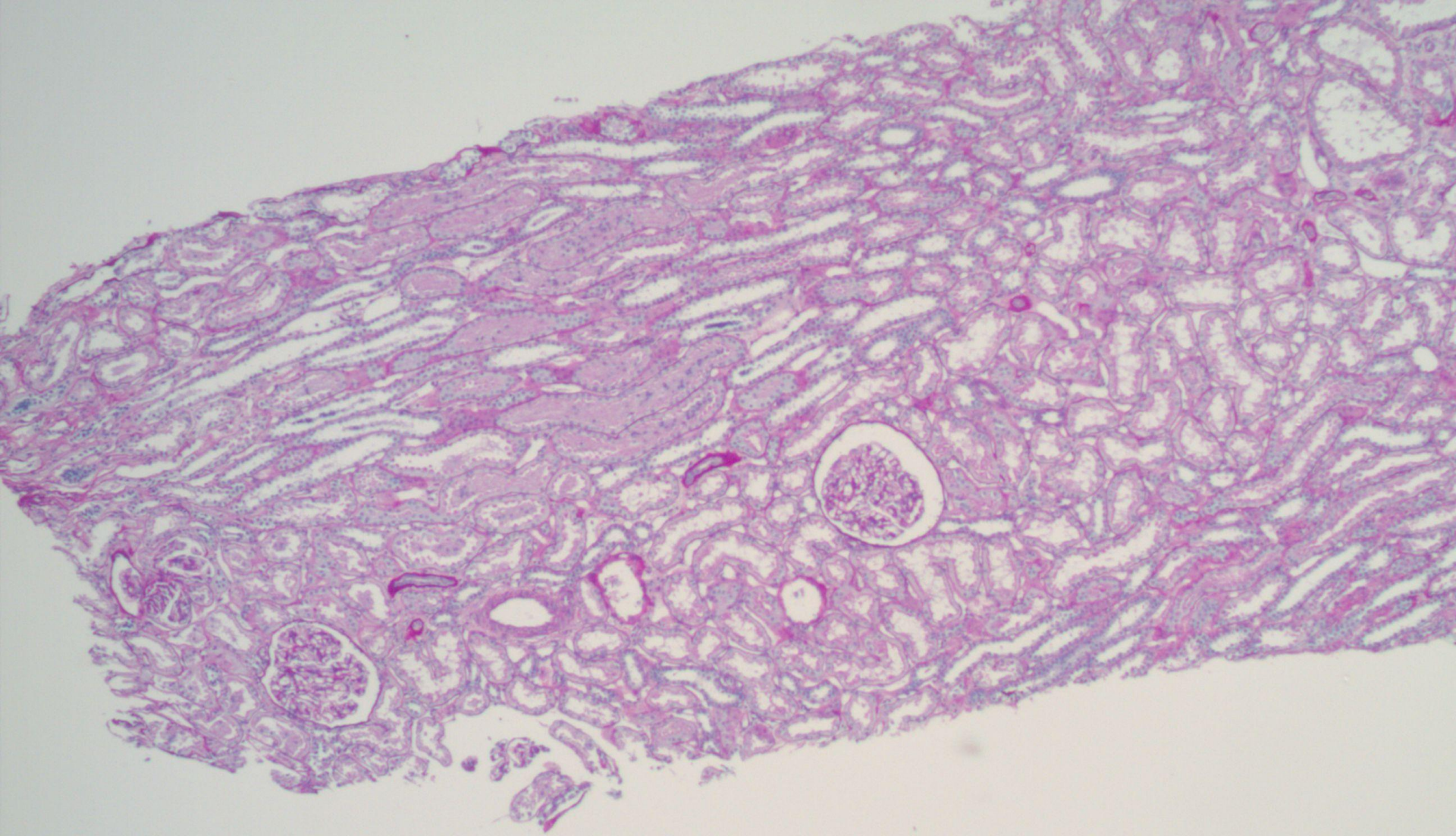
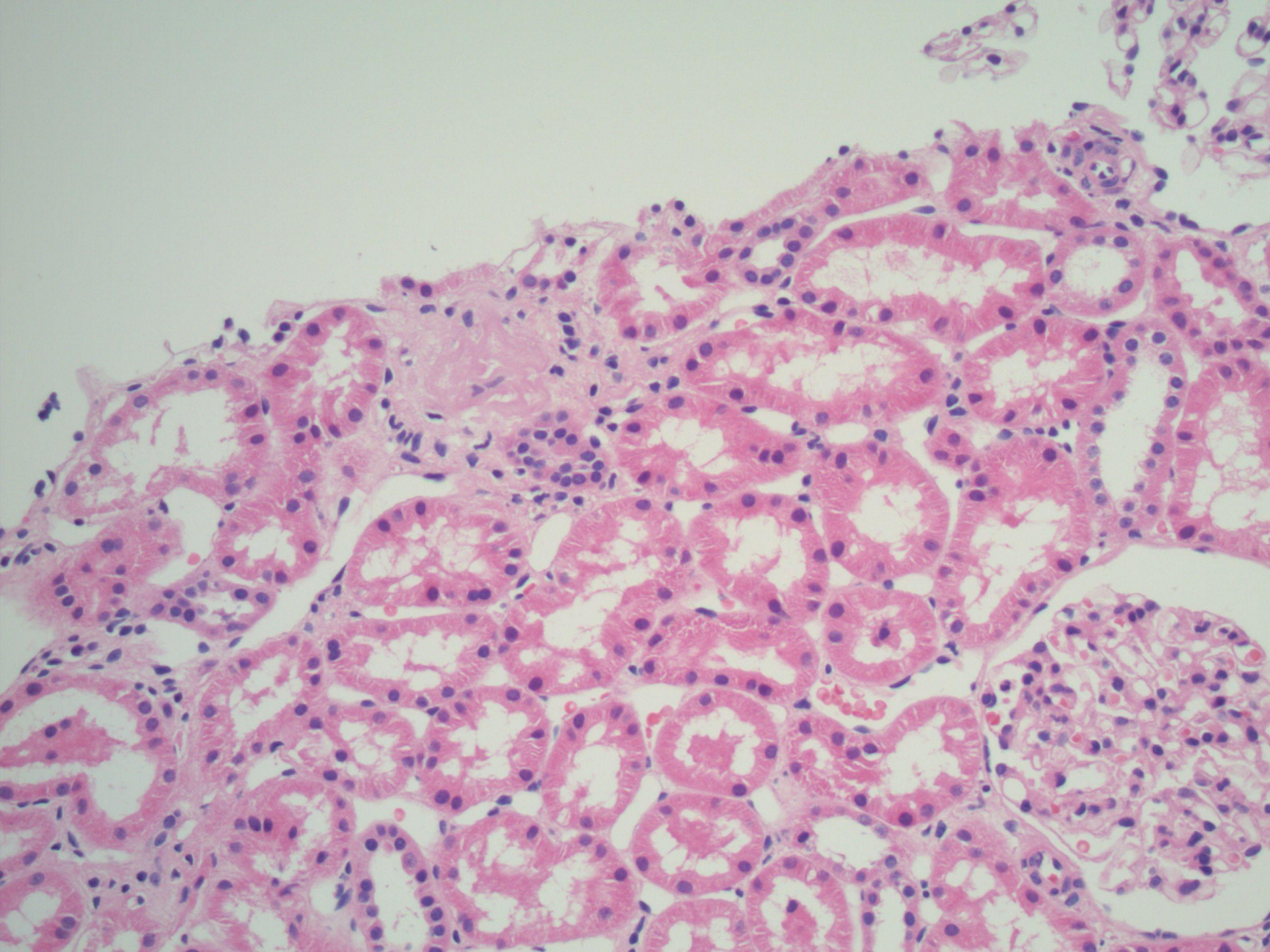


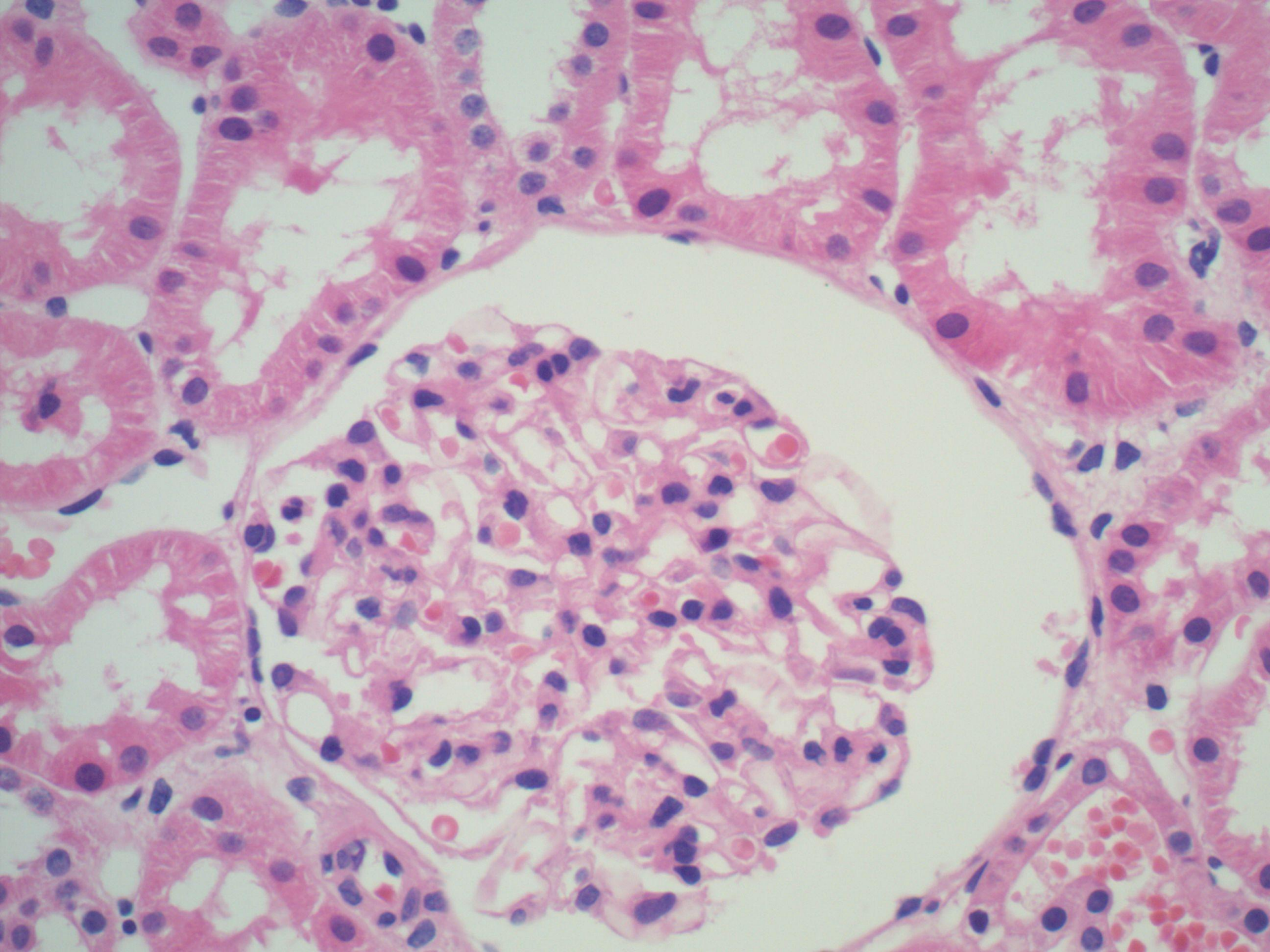
Case 10

- Female aged 12.
- Haematuria.

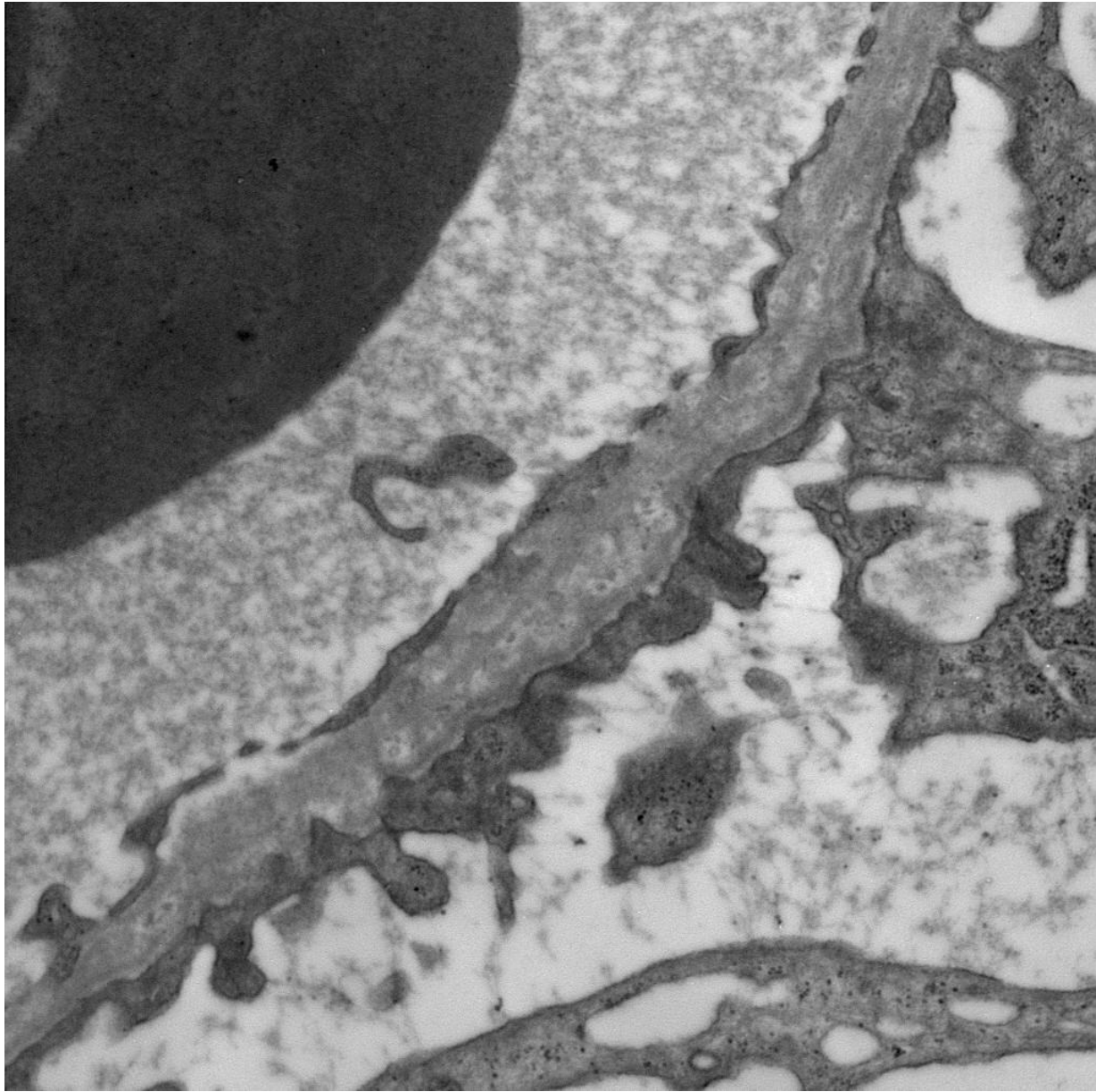


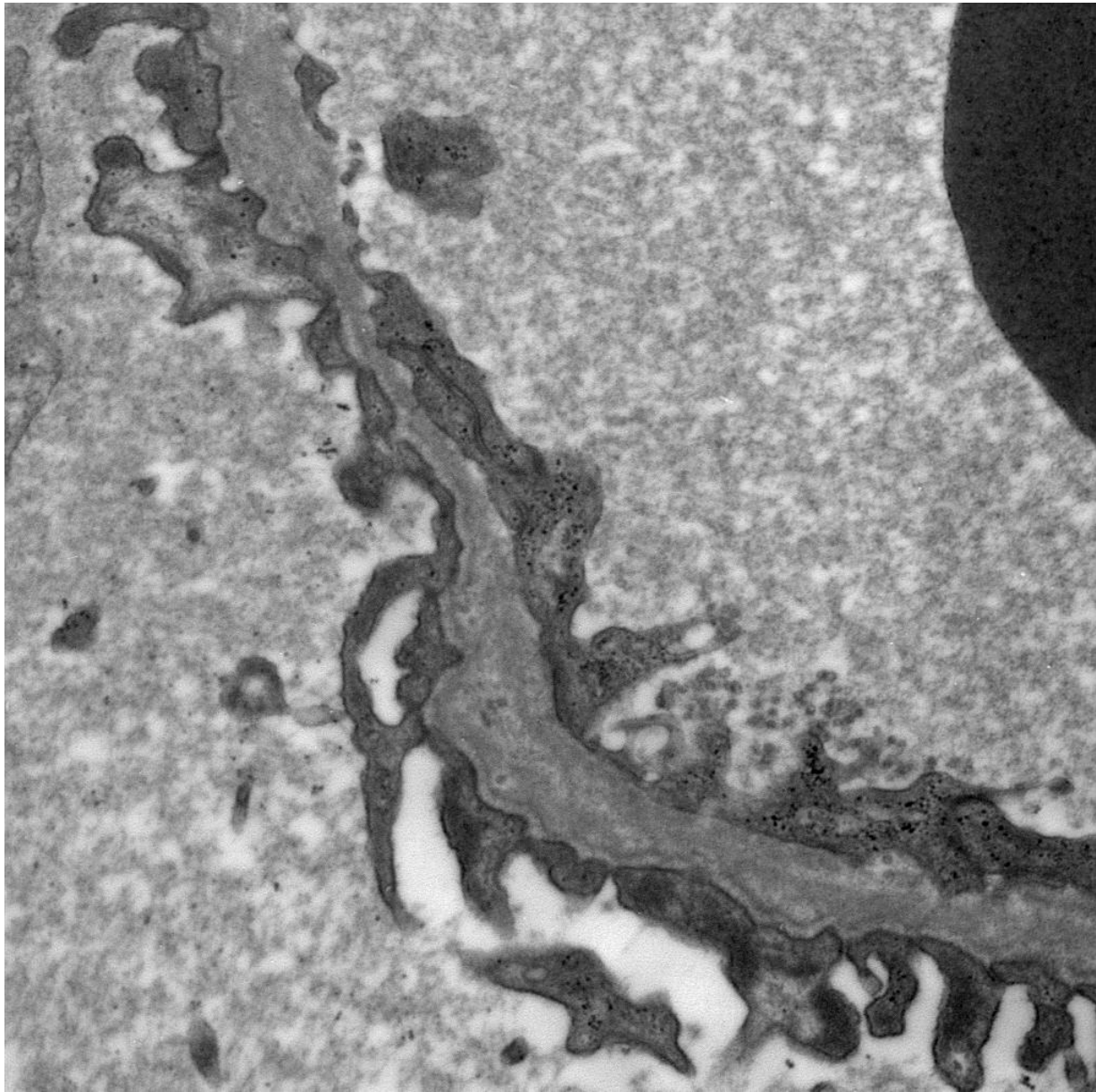


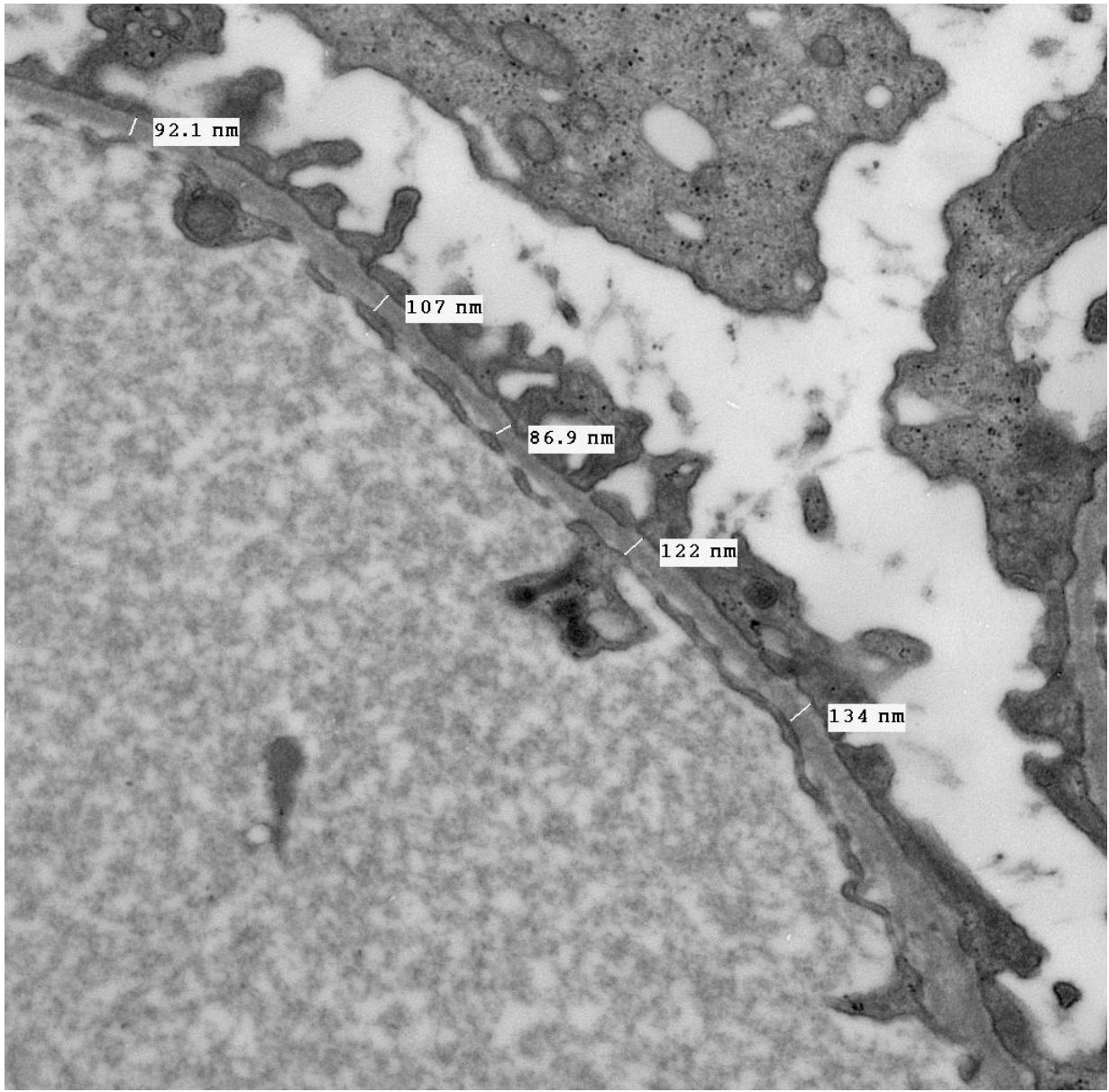


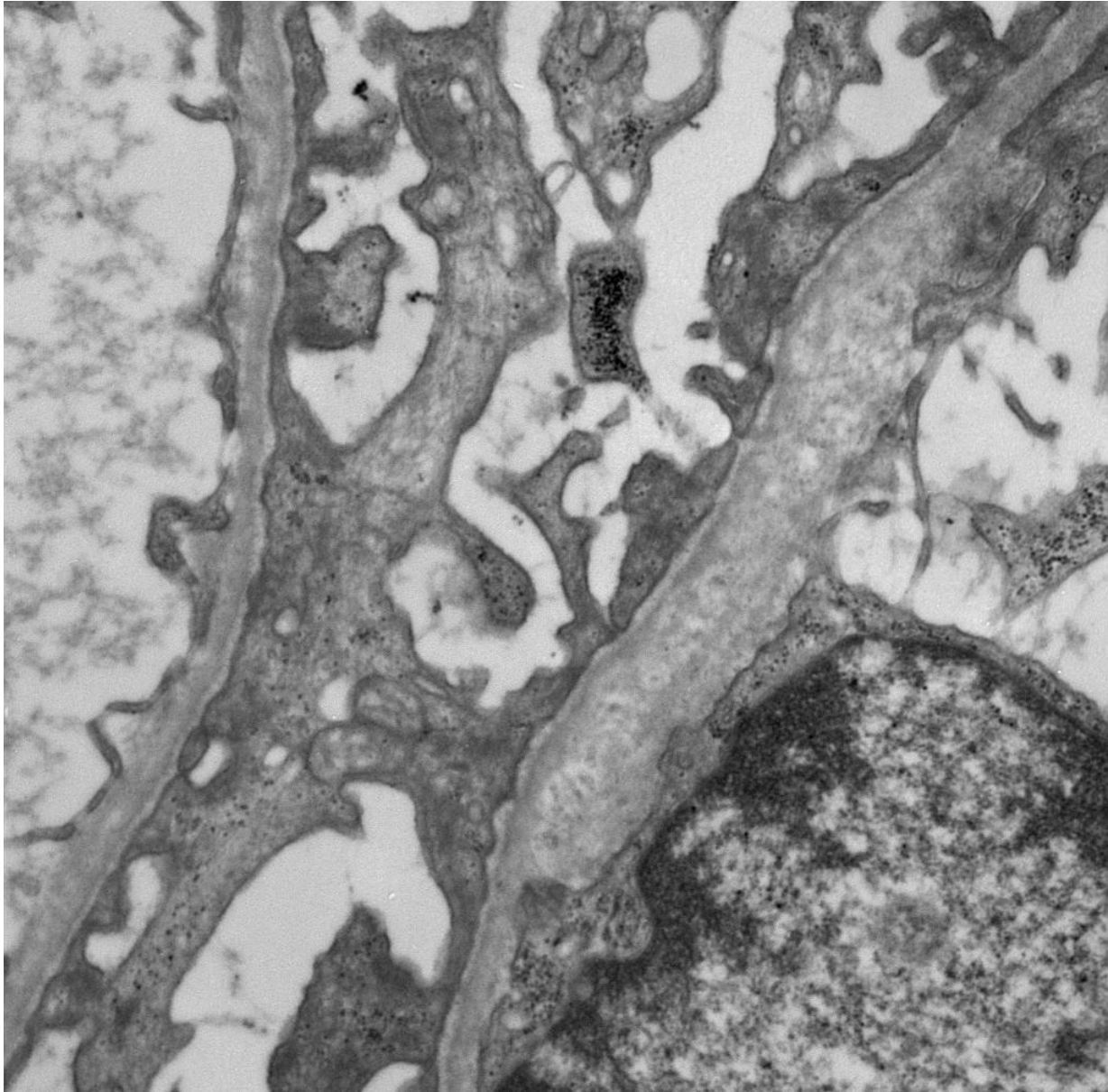


- What is the diagnosis?
- What other diagnoses are possible?
- What do you want to do to investigate further?









Hereditary nephropathies

- abnormalities of type IV collagen – Alport's
- MYH9 related diseases – Epstein, Fechtner etc
– once thought to be Alport's variants
- thin basement membrane nephropathy
- others
- variable histology usually non-specific
- EM, immunoperoxidase studies, familial studies, genetic analysis